

ALPINE RELATIONS

NETWORKING OF EUROPEAN LEADER - AREAS

GET INFORMED - GET INSPIRED
GET INVOLVED



JULY 1 - 3, 2025



st. Anton  **ARLBERG**

Mit Unterstützung von Bund, Land und Europäischer Union

 Bundesministerium
Land- und Forstwirtschaft,
Regionen und Wasserwirtschaft

WIR leben Land
Gemeinsame Agrarpolitik Österreich



Welcome to LINC Austria 2025



© un attimo photographie, Emanuel Kaser

As Governor of Tyrol, I am pleased to welcome over 350 participants from all over Europe to the LINC Conference 2025 in St. Anton am Arlberg. The European LEADER program is a unique success story and serves the further development of rural areas. Having 10 LAGs in Tyrol, we are proud to implement LEADER throughout our entire province. Within the framework of CLLD, the LEADER regions can also draw on regional EFRE-funds and funds for cross-border cooperation. The coordination of EU funds at a local level strengthens innovative and sustainable development. I wish you a great LINC Conference 2025, with a lot of European spirit and memorable moments.

Anton Mattle – Governor of Tyrol



© Gemeinde St. Anton am Arlberg

As Mayor of St. Anton am Arlberg and Chairman of the host LAG RegioL, I have been dedicated to bringing the LINC conference to my home region for long. I have already had the pleasure of attending several LINC conferences and the special flair of these events has always overwhelmed me. Set in the beautiful surroundings of St. Anton am Arlberg, in the heart of the Alps, this year's conference will embody the LINC spirit particularly well under the motto "Alpine relations", offering many new experiences. A warm welcome to St. Anton am Arlberg!

Helmut Mall – Mayor of St. Anton am Arlberg and Chairman of Regional Management Landeck

The first LINC Conference took place in the Kitzbühel Alps region, and this year, in 2025, we will meet for the 15th time again in Austria. My predecessor, Barbara Loferer-Lainer, developed and promoted this special format of European networking among LEADER regions together with LAGs from Finland, Estonia, and Germany. LINC informs, inspires, and connects, and it has become an annual highlight for many people working in regional development. I look forward to meaningful encounters in the tri-border area of Austria – Italy – and Switzerland, right in the heart of Europe.

Elfriede Klingler – LINC Advisory Board



© RM Kitz-Alpen

LINC is all about exchange, innovation, and collaboration for strong and vibrant rural development – across all borders. The LEADER Forum Austria is also committed to these principles and is a strong advocate, both nationally and internationally, for a forward-looking approach to regional development with the LEADER method at its core. It is therefore a special pleasure to host LINC in Tyrol/ Austria for the third time – to learn from each other and enjoy our time together.

Stefan Niedermoser – Chairman LEADER Forum Austria



© RM regio3

Greetings from the EU CAP Network! We are looking forward to participating in LINC2025 in the beautiful Landeck region in Austria. Since 2016 this annual gathering of LEADER LAGs has had a special spot reserved in our work calendar every year. This is a great opportunity for us to engage in professional exchanges with LAGs and get "infected" by their "can do" spirit and enthusiasm. We wish you a fruitful event that will help you on your path to cooperation, and ultimately, better development of your home territories.

Peter Toth – Networker at EU CAP Network



© EU CAP Network



Program

Tuesday, July 1, 2025

Arrival of participants & Opening Ceremony

9:00 a.m. - 2:00 p.m.	Pre-Program (optional)	
11:00 a.m. - 4:30 p.m.	Registration	Arlberg WellCom
4:30 p.m.	Opening Parade Meeting Point	Grießplatz in St. Anton am Arlberg
5:00 - 6:30 p.m.	Opening Ceremony – Opening Parade through St. Anton am Arlberg – Opening Ceremony – Welcome Speeches	Arlberg WellCom
7:00 p.m. - 10:00 p.m.	Come together & Dinner	Arlberg WellCom

Wednesday, July 2, 2025

From 7:00 a.m. - 8:00 a.m. until 5:30 - 6:00 p.m.	Study tours – Departure depending on Tour – Arrival depending on Tour	Arlberg WellCom
See page 6 for detailed descriptions of all Study Tours.		
7:00 p.m. - 10:00 p.m.	Dinner buffet Open-air in the park in front of the St. Anton am Arlberg Museum	Museum St Anton am Arlberg

Thursday, July 3, 2025

8:30 - 9:00 a.m.	Meeting point for Cooperation Corner Start of the poster exhibition	Arlberg WellCom
9:00 - 11:15 a.m.	Cooperation Corner EU CAP Network – Welcome – Input & Speeches – Cooperation corner on topic tables – Discussion	Arlberg WellCom
11:30 a.m. - 1:00 p.m.	European buffet & Lunch with traditional food	Arlberg WellCom
1:15 - 5:00 p.m.	European Games Experience St. Anton am Arlberg	Arlberg WellCom
7:00 p.m. - open end	Closing Event & Gala Dinner	Arlberg WellCom

OUR 12 STUDY TOURS:

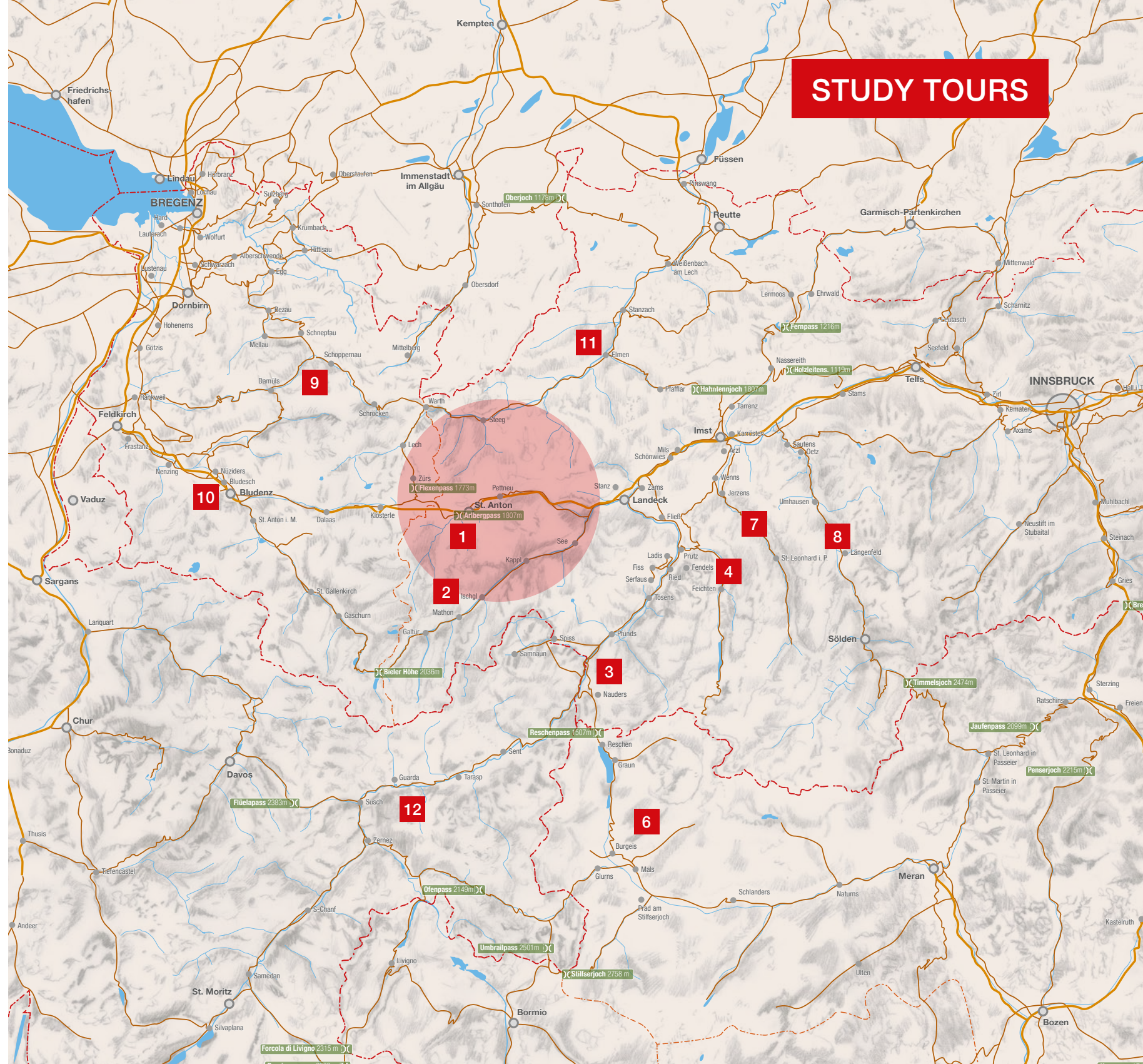
1	St. Anton am Arlberg	P. 08
2	Paznaun	P. 10
3	Oberes Gericht	P. 12
4	Kaunergrat	P. 14
5	Landeck	P. 16
6	Vinschgau	P. 18
7	Imst & Pitztal	P. 20
8	Ötztal	P. 22
9	Bregenzerwald & Montafon	P. 24
10	Vorderland, Walgau & Bludenz	P. 26
11	Außerfern	P. 28
12	Engiadina Bassa / Val Müstair	P. 30

As a Local Action Group (LAG) for more than 15 years, RegioL has already implemented numerous Leader projects in the Landeck district and established connections with other LAGs. As a region in the centre of the border triangle between Austria, Italy and Switzerland, we are particularly proud of our cross-border cooperations.

Our region is rich in valleys, which we are looking forward to present to you as part of the 12 Study Tours. Each individual Study Tour will introduce you to LEADER projects and highlights from the respective areas. We are grateful for the support of different partner-LAGs which organize and accompany some of the tours.

Legal notice

Contents: RegioL
Graphic design and layout: dieWEST.at, Imst
Photo front page: dieWEST.at, Imst | Dominic Kummer
Subject to changes without notice! All rights reserved!



Along St. Anton am Arlberg by E-Bike

Guided tour of the Gand mine | Visit of the municipal biomass-heating & hydropower-energy plant | Trip to the Wagner Hütte in the Verwall valley | Visit of the St. Anton am Arlberg Museum

🕒 **departure:** 8:00 a.m. / arrival 6:00 p.m. 📍 **meeting point:** Arlberg WellCom
 📄 Tour is exclusively **by e-bike!**

This study tour starts with an e-bike ride from the center of **St. Anton am Arlberg** to the **Gand mine**, where you will learn about the history of mining in the region.

After that, we will gather insights to following energy efficiency initiatives St. Anton am Arlberg: The **biomass heating plant of the municipality and the hydroelectric power station**. Our e-bike Tour will then guide us to the Verwall-Valley, where we will have lunch at the **Wagner Hütte**.

In the afternoon, the local destination management organization and the representative of the Climate Adaption Region will join us for a presentation. Here we want to mention that the municipality of St. Anton am Arlberg was honoured as Best Tourism Village 2023 by UN Tourism. Also, we will be introduced to the Landeck volunteer partnership and its rickshaw-project for the Stanzertal senior-citizens centre.

Our program for the day finishes with a guided tour through the **museum** with interesting insights into the impressive history of St. Anton am Arlberg and its cultural heritage.



Wagner Hütte



St. Anton am Arlberg



Kraftwerk Verwall



St. Anton am Arlberg

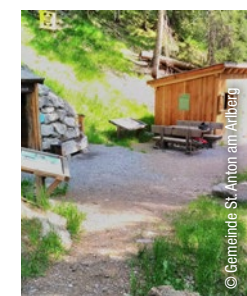


Museum St. Anton am Arlberg

Nähwärme
St. Anton



Gand mine



Along Trisanna in Paznaun

Visit of the Alpinarium Galtür | Guided tour & tasting at the farm cheese dairy Hofkäserei Huber | Discover the cultivation and handcraft around the Galtürer Enzner | Walk through Ischgl, short hike and trial archery course

🕒 **departure:** 7:45 a.m. / arrival 6:00 p.m. 📍 **meeting point:** Arlberg WellCom

This study tour brings us to the **Paznaun valley** where our first stop will be the **Alpinarium Galtür**. This exhibition and documentation centre on life in the high alpine region is a very special kind of experience museum. As a central component of a 345-metre-long and 19-metre-high avalanche protection wall, it also impresses with its architecture, which is unique in Europe. This exhibition center was constructed after the avalanche catastrophe back in 1999 and is embedded as memorial into an avalanche protection wall. Here, we will learn about alpine risks and experience what life in the high altitude alpine regions around Galtür is about.

Next, we visit the project **Galtürer Enzner**, which is characterized by its cultivated yellow gentian and the show distillery. Here, we will gather insights to innovative product developments with the gentian plant.

At the **Huber farm cheese dairy**, we will gain an insight into cheese production, taste various award-winning cheese specialties and stay for lunch. After this culinary experience, we go for a walk through **Ischgl**, where we will get introduced to the local destination management organization and the local Climate Adaption Region initiative.

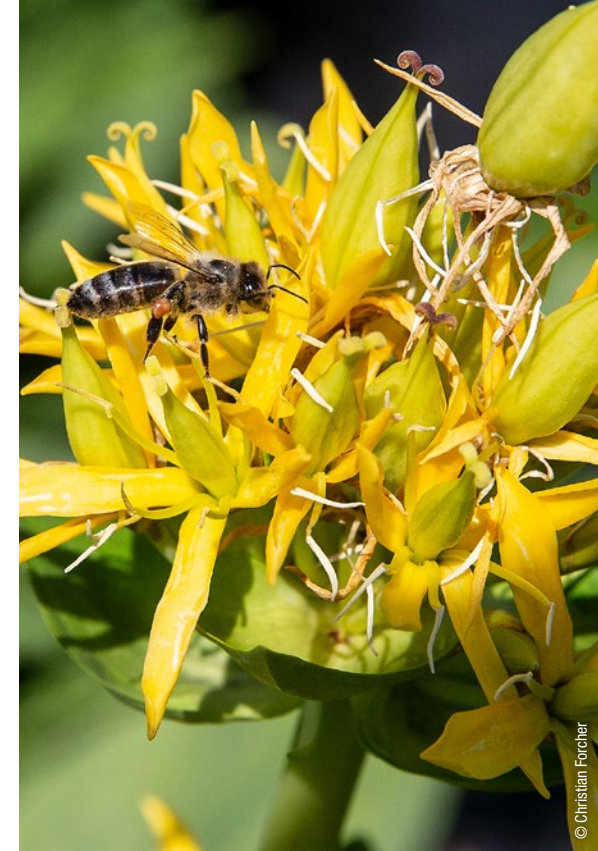
To conclude this study tour, get up the mountain by cable car where we will have a short hike to lake Pardatscher See. There, you can test your skills on the **archery course**!



Alpinarium Galtür



Hofkäserei Huber (cheese dairy farm)



Yellow gentian



Galtürer Enzner



Paznaun



Archery course



Ischgl

Through the Obere Gericht to the border

Kathrein sledge manufactory | Short hike & Guided tour of the middle-age court and former border defense station Altfinstermünz | Walk through municipality Prutz on the purpose of the regional village center revitalization initiative, e-car-sharing and Climate Change Adaption initiative

🕒 **departure:** 7:45 a.m. / arrival 6:00 p.m. 📍 **meeting point:** Arlberg WellCom

This study tour brings you to the **Oberes Gericht region**. Our first stop will be in **Prutz**, at the Kathrein Rodel family business, a traditional sledge-manufacture since more than 130 years. Here, we will learn more about the company's quality principles, its traditional craftsmanship and state-of-the-art production technology.

After a short hike along the former Roman Via Claudia, once one of the most important transalpine transit routes, we approach the historically valuable **Altfinstermünz fortress**, a former border and customs station. Here we will get first hand insights into the middle age! Right next to the fortress, the **castle tavern "Klausenschenke"** will provide lunch for us. In the afternoon, we will get insights to the local destination management organization in the border region to Swiss and Italy. Also, the local Climate Change Adaption Region will be introduced.

After all these cultural insights, a refreshment is always welcome! This is why we will get introduced to the handcraft of beer brewing with the opportunity of beer tasting. To conclude this study tour, we will have one more stop in the municipality of Prutz, where we learn more about the importance of revitalization of the regional village center, get to know the local e-car sharing project and several **climate change adaption projects**.



Kathrein Rodeln



Prutz



Winklhaus Prutz

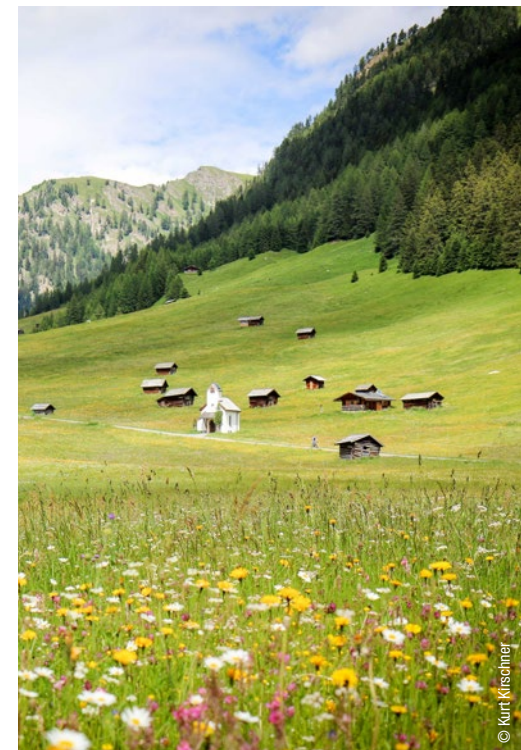


Klausenschenke



Altfinstermünz fortress

Climate Change
Adaption project



Oberes Gericht

Around the Kaunergrat

Hike through the moor landscape Piller Moor | Presentation of the Kaunergrat Nature Park | Visit of an exhibition on the topic of climate & glacier in Quellalpin | Guided tour of the Maass Brand distillery

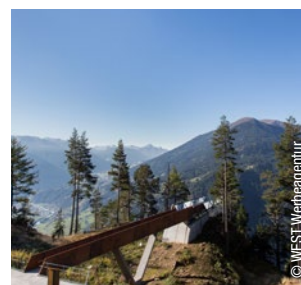
🕒 **departure:** 7:45 a.m. / arrival 6:00 p.m. 📍 **meeting point:** Arlberg WellCom
 🚐 Tour is **wheelchair-accessible!**

This study tour starts with a largely accessible hike along **Piller Moor** nature trail which takes us through exciting moor landscapes with its manifold flora & fauna. After that, we will enjoy the mountain scape from a viewing platform in front of the **nature park house Kaunergrat**, where we will be introduced to the respective organization. Here, we have lunch and get the opportunity to experience the region through an exhibition.

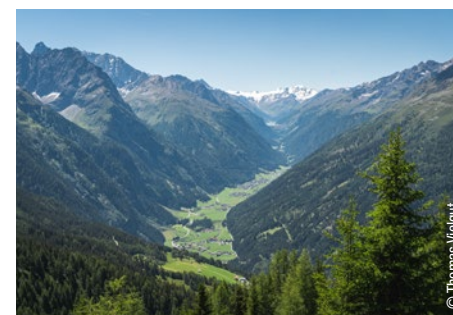
After refilling our batteries, we drive to the Kaunertal valley. Approaching the multifunctional building **Quellalpin**, we will get a guided tour through the exhibition “With all our strength” which puts emphasis on climate change in alpine regions & its impact on our glaciers. In addition, the local destination management organization will introduce itself, highlighting the reasons why the region was honored by the UN as Best Tourism Village in 2021. This will be followed by a presentation of the local Climate Adaption Region initiative.

To conclude this study tour, we will visit the traditional **Maass** family business, which specialized in fruit cultivation and fine distillery.

Optional: Visit to Hotel Weißseespitze – a pioneer in the field of accessible travelling and was the first **wheelchair-accessible** hotel in the Alps. Since the 2000s, the hotel is renowned for its comprehensive accessibility for people with mobility impairments.



Viewing platform Gacher Blick



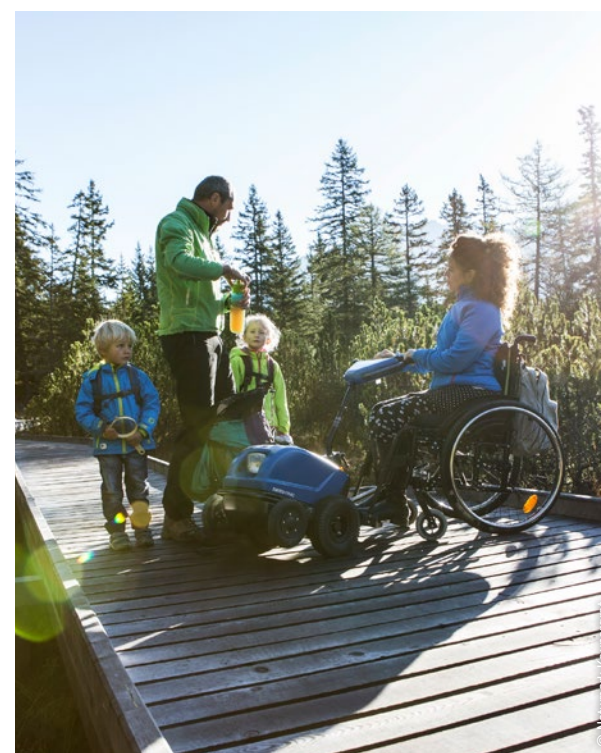
Kaunergrat



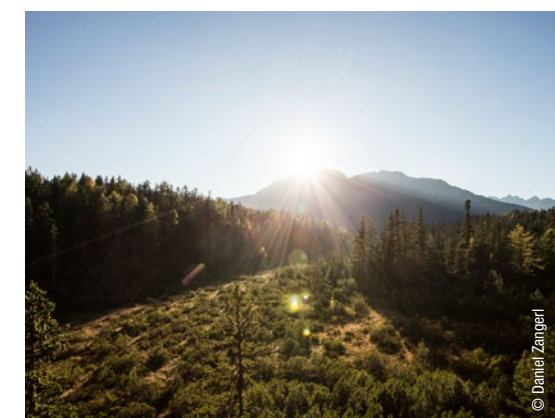
Quellalpin exhibition “With all our strength”



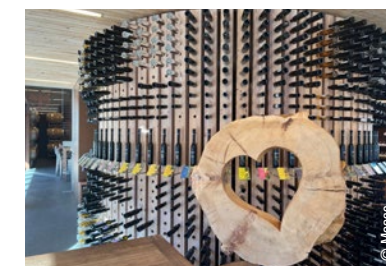
Nature Park House Kaunergrat



Piller Moor nature trail is wheelchair-accessible



Piller Moor



Maass distillery

Around Landeck

Guided tour of the tourism software company Casablanca Hotelsoftware | Presentation of the innovation center Lantech with insights into visionary companies in the areas of robotics, smart data and connectivity | Visit of the University Innsbruck division in Landeck | Guided Tour of the project MINT-Fab Lab | Hike through the natural scene of Zammer Lochputz

🕒 **departure:** 8:00 a.m. / arrival 6:00 p.m. 📍 **meeting point:** Arlberg WellCom

This studytour will bring us to the city and surroundings of **Landeck**, where we will first get introduced to **Casablanca Hotelsoftware**. Besides its internationally implemented Software for hotels and gastronomy, the family business is renowned for its employer branding initiatives.

After that, we will approach the **Lantech innovation center**, where we learn more about visionary companies in the fields of robotics, smart data and connectivity.

Several tourism-related educational institutions are located in the Landeck region. One of such is the Tyrolean Vocational School for Tourism, where we will get insights to the local tourism industry and have lunch. After that, we will visit the University of Innsbruck division in Landeck. Also, the local destination management organization, its regional marketing initiative and the Climate Adaption Region initiative will be introduced.

To conclude this study tour, we will get to know the **MINT-Fab-Lab** at a secondary school in Landeck and finish with a hike through the impressive **Zammer Lochputz**.



Lantech innovation center



Zammer Lochputz



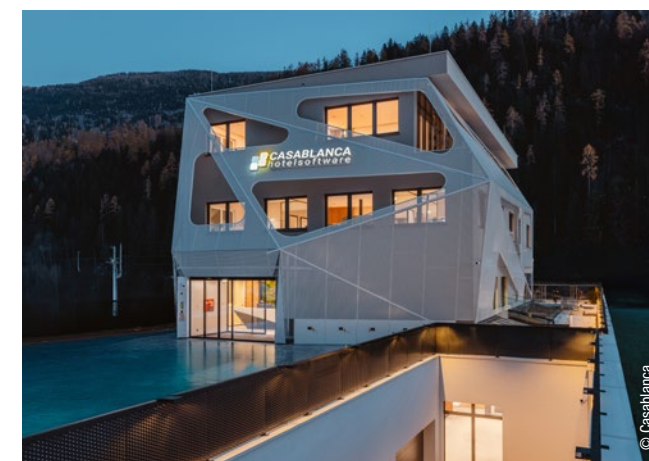
Landeck



MINT-Fab-Lab



Hoher Riffler



Casablanca
Hotelsoftware

Val Venosta in the Terra Raetica

Trip to northern Italy to experience transnational cooperation: Visit of the Monastery Marienberg | Guided tour of the Prad organic village dairy | Presentation of a local association to secure rural development in the region | Guided tour through the medieval town of Glurns and visit of the town-mill | Presentation of Lasa marble in the Marble World

🕒 **departure:** 7:00 a.m. / arrival 6:00 p.m. 📍 **meeting point:** Arlberg WellCom

This study tour will start with a border crossing to **Italy** where we get to know the transnational cooperation partners of the CLLD Interreg Italy Austria project **Terra Raetica**.

After a drive through the impressive Reschen Pass region, we will visit the **Marienberg Monastery**, which played an important role within the history of the border triangle Italy, Switzerland and Austria.

Our journey will continue with a visit of **Prad** where we will get a guided tour of the organic village dairy with the opportunity of tasting local cheese specialties. Building on this culinary experience, we will have lunch at the cultural **café Salina in Glurns**. This is a project of the **Vinschgau** Citizens' Cooperative which we will have the opportunity to learn more about!

The tour will continue with a walk through the medieval town of **Glurns** where we are introduced to the Glurns town mill project. To conclude this study tour, we will visit the Lasa Marble Worlds and find out why **Lasa marble** enjoys global recognition.



Marienberg Monastery



Marienberg Monastery



Lasa Marble



Café Salina in Glurns



Glurns



Dorfsennerei Prad



Glurns town mill

From Gurgltal to Pitztal

Guided tour of the recording studio Wilderness | Exhibition on regional carnival-traditions and cultural heritage at the Fasnachtshaus | Introduction to the volunteer partnership Imst | Guided tour of the Ibex-Centre in St. Leonhard im Pitztal | Visit of the house WEIDtBLICK and presentation of the Nature Workshop projekt

🕒 **departure:** 7:45 a.m. / arrival 6:00 p.m. 📍 **meeting point:** Arlberg WellCom

This study tour brings us to the district **Imst**, where we will first be introduced to the recording studio Wilderness. This studio is located in a converted industrial building from 1900 and provides a place of interaction of musicians, producers, songwriters and creatives. Next, we will learn more about an ancient tradition in the Alpine region, the **Schemenlauf** and its special features at the **Fasnachtshaus in Imst**.

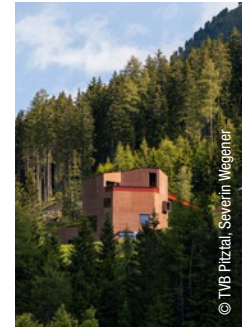
Farming is of fundamental importance for our region, for why we will visit the agricultural school to have lunch. Besides insights to local farming, we will hear more about the local destination management organization and the Imst volunteer partnership.

Our journey will continue with a visit of the **Tyrolean Ibex Centre in the Pitztal valley**. There we will learn more about the changing relationship between humanity, nature and culture.

To round off this study tour, we will visit the newly built **WEIDtBLICK House** and attend a presentation on the Nature Workshop projekt.



Pitztal



Steinbockzentrum



WEIDtBLICK House



Fasnachtshaus in Imst



Wilderness Studio



Naturwerkstatt

Tyrolean
Ibex Centre

Ötztal

Guided tour of the cultural exhibition Ötztal Museums | Tour of the Ötztal Nature Park House | Presentation of the tourism region and its sustainability coordination | Introduction of the project “Ötztalerin” | Visit of the local birds of prey show | Excursion into the past with a visit of the Ötzi-Village

🕒 **departure:** 7:45 a.m. / arrival 6:00 p.m. 📍 **meeting point:** Arlberg WellCom

This study tour will start with manifold insights to the museum concept and various projects of the **Ötztal museums**. Here, we will experience a guided tour through the local history museum with exciting facts of cultural history in the Ötztal valley.

After that, this study tour will continue with a visit of the **Nature Park House in Längenfeld** where we will receive information about the **Ötztal Nature Park** and various projects. More than just the headquarter of the nature park, the building represents an information hub and competence center for the natural heritage in the Ötztal valley.

For lunch, we will be served with regional specialties from local farmers. After recharging our batteries, we will learn more about the local destination management organization. Thus, we will be introduced to the destinations sustainability coordination employee and the Ötztalerin project.

In the afternoon, the program includes a visit to a **bird of prey demonstration**. Here, eagles, buzzards, falcons, kites and many other bird species will show off their spectacular flying skills to us!

To conclude the study tour, we'll take a step back in time into the world of **Ötzi** the Iceman – discovering how he lived, worked, and farmed during the Neolithic Age.



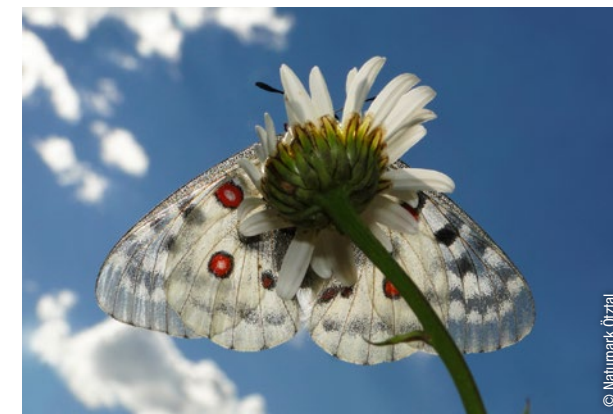
Ötztal Museum



Ötztal Museum



Ötzi Village



Parnassius apollo



Animals in the Ötzi Village



Nature Park House in Längenfeld



Birds of Prey Park

From Bregenzerwald to Montafon

Tour of the museum on the history of the Baroque master builders | Short hike through the Höhlenpark-Klausenstein recreational trail | Tour of the Werkraum Haus with current exhibition | Presentation of the KäseStrasse and cheese tasting | Tour of the activity room on natural hazards

🕒 **departure:** 7:00 a.m. / arrival 6:00 p.m. 📍 **meeting point:** Arlberg WellCom

The first stop within this study tour will be at the **Kuratiehaus in Au** where we will visit the museum on the founding history of the **Bregenzerwald baroque master builders**.

After that, we will have a short hike on the **Klausenstein cave park recreational trail in Bezau**. Here we will experience boulders as high as houses piled up against each other, forming the existence of “landslide caves”.

Next, we visit the **Werkraum Haus in Andelsbuch** with the current exhibition. The handicraft sector is of central importance in this region. The appreciation for this should be communicated and further developed beyond the borders.

Explore the KäseStrasse and cheese tasting in the aging-cellar in Lingenau. The **KäseStrasse Bregenzerwald** represents the rural region, a network of producers and marketers, a philosophy of harmony between quality farm products and modern marketing. To conclude this study tour, we will visit the **educational center in Vandans in Montafon**, emphasizing on natural hazards, climate change and protective forests for locals and guests – from amateur to experts.



Werkraum Haus
in Andelsbruch



Klausenstein cave park



KäseStrasse Bregenzerwald



Aktionsraum Naturgefahren



Bregenzerwald



Bregenzerwald baroque master builders



Aktionsraum Naturgefahren

From Arlberg to Feldkirch

Tour of Blumenegg castle ruins with cultural pavilion | Walk & guided tour of Feldkirch Wildlife Park | Village walk through the municipality of Göfis and presentation of various projects | Tour of Schnifis Alpine dairy with cheese tasting

departure:

8:00 a.m. / arrival 6:00 p.m.

meeting point:

Arlberg WellCom

On our first stop we will visit the renovated **Blumenegg castle ruins**. This is not only a historical monument, but also a diverse cultural space with a multifunctional cultural pavilion.

After that, we will go on a guided walk through the **Feldkirch Wildlife Park**, which is an important local recreation area where we will learn more about the local animals and the planned projects of the region to foster modernization.

Approaching the **Schattenburg castle**, we will be served with local specialties for lunch. As part of a village walk through the municipality of **Göfis**, we will visit the **Bugo**. Far more than just a library, this is also a vital place of exchange. Besides that, initiatives of the municipality to reduce migration of the rural region, foster sustainable living, and revitalization of buildings are introduced.

As final stop of this study tour, we will visit the **Schnifis dairy** where we learn about the local cheese culture. Don't miss to taste and buy cheese-specialties there!



Schnifis dairy



Bugo Göfis



Blumenegg castle ruins



Blumenegg castle ruins at night



Feldkirch




Schattenburg castle




Feldkirch Wildlife Park

Along the Lech through the Außerfern

Guided tour of the open-air stage Geierwally in Elbigenalp and Visit to the Wunderkammer | Tour of the Tiroler Lech Nature Park Centre | Tour of the Ehrenberg Castle World

 **departure:** 7:00 a.m. / arrival 6:00 p.m.

 **meeting point:** Arlberg WellCom

Visit to the **Geierwally open-air theatre in Elbigenalp**, where plays are performed in front of impressive mountains. After that, we will be introduced to local history by visiting the **Wunderkammer**. Woodcarving is cultural heritage in Elbigenalp for why it is home to one of the oldest and most renowned woodcarving schools in Europe.

Our study tour continues with a visit to the **Tiroler Lech Nature Park Centre** at the **Klimmbrücke (bridge) in Elmen**. The architectural masterpiece is the administrative centre of the nature park and is embedded to the Tiroler Lech wild river landscape, a **Natura 2000 region**. This will be a perfect location to have lunch with a regional buffet full of specialities from local farmer's.

In the afternoon, we will be at the imposing **Ehrenberg castle** ensemble near Reutte. Ehrenberg was once a defense facility, administrative centre and boarder control station. Nowadays, the castle can be easily accessed by inclined railway and offers exciting views with a 400 metre long suspension bridge over the valley.



Ehrenberg castle



Nature Park



Highline Ehrenberg



Ehrenberg castle



Geierwally open-air theatre in Elbigenalp



Ehrenberg castle



Tiroler Lech Nature Park Centre

Vom Engiadina Bassa ins Val Müstair

Vorstellung Regionalentwicklung der Region Engiadina Bassa / Val Müstair | Besichtigung Nationalparkzentrum Zernez | Informationen zu Flachsprojekt im Val Müstair sowie Besichtigung der Sennerei, Fleischverarbeitung & Getreideannahme im Val Müstair | Informationen zum Naturpark Val Müstair | optional Kloster St. Johann

departure: 7:00 a.m. / arrival 6:00 p.m.

meeting point: Arlberg WellCom

Only in **German** language!

Die Region Engiadina Bassa / Val Müstair ist in der CLLD Interreg-Region Terra Raetica im Italien Österreich Programm unser assoziierter Partner im Dreiländereck. Gemeinsame Fahrt durch das Unterengadin bis nach Zernez. Im alten Gemäuer von **Schloss Planta Wildenberg** erfahren wir mehr über die Ziele, Inhalte und Projekte der Regionalentwicklung in der Region sowie über die grenzüberschreitende Zusammenarbeit in der Terra Raetica.

Im Nationalparkzentrum lernen wir den **Schweizerischen Nationalpark** kennen und besuchen die Ausstellung zum Thema „Wildnis im Zentrum“. Beim gemeinsamen regionalen Mittagessen gibt es Gelegenheiten für Diskussionen.

Weiterfahrt über den Ofenpass ins **Val Müstair**. Vorstellung und Besichtigung von verschiedenen Projekten, bei denen der Naturpark Biosfera Val Müstair bei der Entwicklung dabei war. Wir erfahren mehr über die Wiederbelebung des Flachs-anbaus und besichtigen die**Chascharia (Sennerei)**, **Bacharia (Schlachthof)** und die **Getreidesammelstelle**, welche durch ein PRE (Projekt regionale Entwicklung) errichtet bzw. erneuert werden konnte. Vorstellung des Naturparks und konkreter Beispiele zur nachhaltigen Entwicklung im Parkgebiet.

Optional kann das **Kloster St.Johann in Müstair** besucht werden (UNESCO Weltkulturerbestätte).



Flachs Projekt



Ausstellung Nationalpark



Val Müstair



Schloss Planta Wildenberg



Käse Chascharia



Nationalparkzentrum Zernez



Val Müstair

LEADER Austria

LEADER in Austria started in 1996, immediately after Austria joined the EU. In the first period there were 31 LAGs selected and the focus was on disadvantaged rural areas.

LEADER

Entwicklung durch die regionale Bevölkerung

Since LEADER 2007-2013 the focus was on vibrant and active rural areas which forced cooperation. For the current funding period 2023-2027, 83 LEADER regions have been selected in Austria, reaching over 5 million people in total. LEADER is covering all rural areas, with the exception of major cities. The role of LEADER now is changing from a funding advisory office to an interpreter and enabler of transformation.

GOALS AND AREAS OF ACTION

The LEADER regions in Austria focus on four central areas of action:

- Increasing value creation
- Sustainable development of natural resources and cultural heritage
- Strengthening structures that serve the common good
- Climate protection and adaptation to climate change

These priorities form the foundation for the Local Development Strategies (LDS) of the regions.

FUNDING

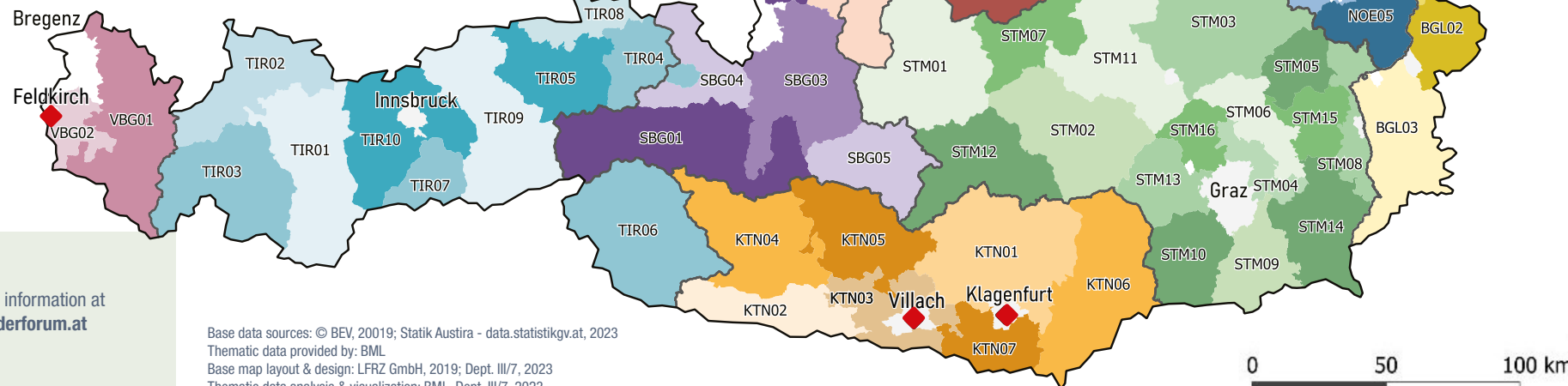
A total of 210 million euros from the CAP Strategic Plan is available for the implementation of LEADER strategies in the 2023-2027 period. Additional contributions from project partners and public administration further increase the financial leverage as well as the possibility of using CLLD Multifunds for some LAGs.

ROLES OF THE LEADER REGIONS

The LEADER regions fulfill three key roles:

- **Funding advisory offices:** Support with project development and funding applications
- **Strategy developers:** Creation and implementation of local development strategies
- **Cooperation hubs:** Promotion of networking and collaboration at regional and international levels.

◆ Cities with a privileged functional partnership



Find more information at
www.leaderforum.at

Base data sources: © BEV, 20019; Statistik Austria - data.statistik.gov.at, 2023
Thematic data provided by: BML
Base map layout & design: LFRZ GmbH, 2019; Dept. III/7, 2023
Thematic data analysis & visualization: BML, Dept. III/7, 2023

EU CAP Network

The EU CAP Network is a forum through which National CAP Networks, organisations, administrations, researchers, entrepreneurs and practitioners can share knowledge and information (e.g. via peer-to-peer learning and good practices) about agriculture and rural policy.

The European Commission set up the EU CAP Network in line with the Regulation of the European Parliament and of the Council to support **CAP Strategic Plans (CSPs)**. The Network supports the design and implementation of CAP strategic plans, innovation and knowledge exchange, including EIP-AGRI, and evaluation and monitoring of the CAP.

LAGs may be especially interested in content within our CAP Strategic Plan Factsheets, our Country pages, our good practice database, and the LEADER section of our website. We invite you to explore our past events dedicated to LEADER, especially the Young LEADER Forum or the Workshop on LEADER and Multi-funded CLLD.



LEADER in the EU
CAP NETWORK

Discover our newsletters, including the **LEADER Newsletter**. The most recent editions feature topics including Member State applications of simplified cost options, crisis preparedness, communicating LEADER, approach to Smart Villages, and others. The newsletter is available in English, German, and French. The news articles are available in all 24 EU languages through auto translation on the website (accessible at the bottom of the webpage).



Subscribe to
our newsletters,
including the
LEADER
Newsletter

Our LAG Directory now (at the time of writing this article in the end of May 2025) features basic data from 1.825 LAGs in 22 EU Member States, and we hope LAGs all over Europe will take ownership of their LAG profiles and enrich them with additional data and project ideas.

LINC participants do not need to be taught about transnational cooperation, but our Practical Guide for TNC and the TNC Factsheets may prove to be useful even for “seasoned” practitioners. Both are available from the LEADER Transnational Cooperation section of our website.

ABOUT THE “COOPERATION CORNER” WORKSHOP

The “Cooperation Corner” at LINC2025 will feature presentations from the host region and the EU CAP Network, including a demonstration of the new LAG Directory features, an exhibition of projects ideas, and discussion of TNC ideas and challenges in thematic mini-workshops. We look forward to meeting you on 3 July 2025 in St Anton, Austria.

Keep up the LEADER spirit, and feel free to contact us at

leader@eucapnetwork.eu



EU CAP NETWORK
SOCIAL MEDIA



The host LAG: RegioL

RegioL – the regional management association for the district of Landeck – holds LEADER Region status since 2007. It is located in Landeck, which is the capital of the district. It holds responsibility for the regional development of all 30 municipalities.

The region of Landeck is located in the west of the federal state of Tyrol. Landeck's geographical situation is defined by its borders with the federal state of Vorarlberg to the west, the regions of Graubünden (CH) and South Tyrol (IT) to the south, the district of Imst (Tyrol) to the east and the district of Reutte (Tyrol) to the north. In addition to its role as a LEADER LAG, RegioL is responsible for federal state funds, including the regional economic program for Landeck and the Tyrolean volunteer partnership.

Furthermore, RegioL stands in intense cross-border collaboration with the regional management association of Imst and partners from Engiadina Bassa/Val Müstair (CH) and Vinschgau (IT) on the Interreg Italy-Austria project "Terra Raetica".

Thus, RegioL takes an instrumental role in promoting the future viability of tourism as the primary economic driver within the district but also expand and

strengthening innovative economic sectors. Also, RegioL supports approximately 1800 regional agricultural and forestry operations, reduces vacancies in the region, sets measures to increase sustainability and thus improves the quality of life in this wonderful district.

As proud partner of the LEADER Austria family, RegioL appreciates the opportunity to provide insights into the projects implemented by our LAG as well as our neighboring LAGs Regio Außerfern REA, Regio Imst, Regio-V and the LAG Vinschgau. Thank you for enriching LINC 2025 with your participation!



Team RegioL



St. Anton am Arlberg



st.Anton
ARLBERG

St. Anton am Arlberg – an internationally renowned municipality, deeply rooted in Tyrolean tradition and at the same time a trendsetter in terms of sustainability and climate protection.

As part of the KLAR! region (climate change adaptation model region), the municipality plays an active role in environmental sustainability and the responsible usage of the and resources. Here, in the cradle of alpine skiing, forward-looking investments are being made to ensure a good quality of life for both current and future generations.

The impressive alpine scenery that surrounds St. Anton am Arlberg is not only the basis for tourism, but also an obligation: numerous measures in the areas of energy, mobility and environmental education emphasize the claim to be a sustainable pioneer in the Alps. The municipality is particularly proud of its own electricity production from renewable sources - with hydroelectric power plants and photovoltaic systems

that make a significant contribution to the regional energy supply. A community-owned local heating network (biomass) supplies the numerous public buildings, hotels and private homes since 2020. This enhances a reduction of the municipality's ecological footprint, constituting a strong example for climate awareness.

St. Anton am Arlberg is more than just a globally renowned holiday destination - it is a place of togetherness, innovation and conscious living. This foreword is intended to thank all those who, through their commitment - whether in the community, in the KLAR! region or in the local economy - contribute to ensuring that St. Anton am Arlberg remains a sustainable, livable place: for locals and guests from all over the world.



Find more information at
www.stantonamarlberg.com/en/

**We look forward to welcoming
all participants to LINC 2025
in St. Anton am Arlberg.**



FACT BOX

- **Altitude:** between 1,214 and 3,151 m
- **Inhabitants:** 2,400
- **Guest beds:** 12,000
- 1.3 million overnight stays per year (1.1 million in winter)
- 165.8 km² municipal area
- 2 parishes, 1 chaplaincy, 2 primary schools, 1 early childhood centre, 2 kindergartens, 1 secondary school
- 34 associations
- **Electricity production from own hydroelectric power plants:** approx. 60 GWh per year
- **Local heating from own biomass heating plant:** 15.4 GWh per year
- 100 photovoltaic systems with a total capacity of 1.25 MW



Get the LINC 2025 Mobile App!

During the Conference days,
you can access features like:

- Program and Events
- Locations and Maps
- Contacts
- General Information
- Stay updated with the latest news

How to download:

The easiest way to download the mobile app is to scan these codes. After downloading the app, do not forget to enable push notifications to stay up to date on the latest news!



Apple Store



Google Play Store

VENUE:

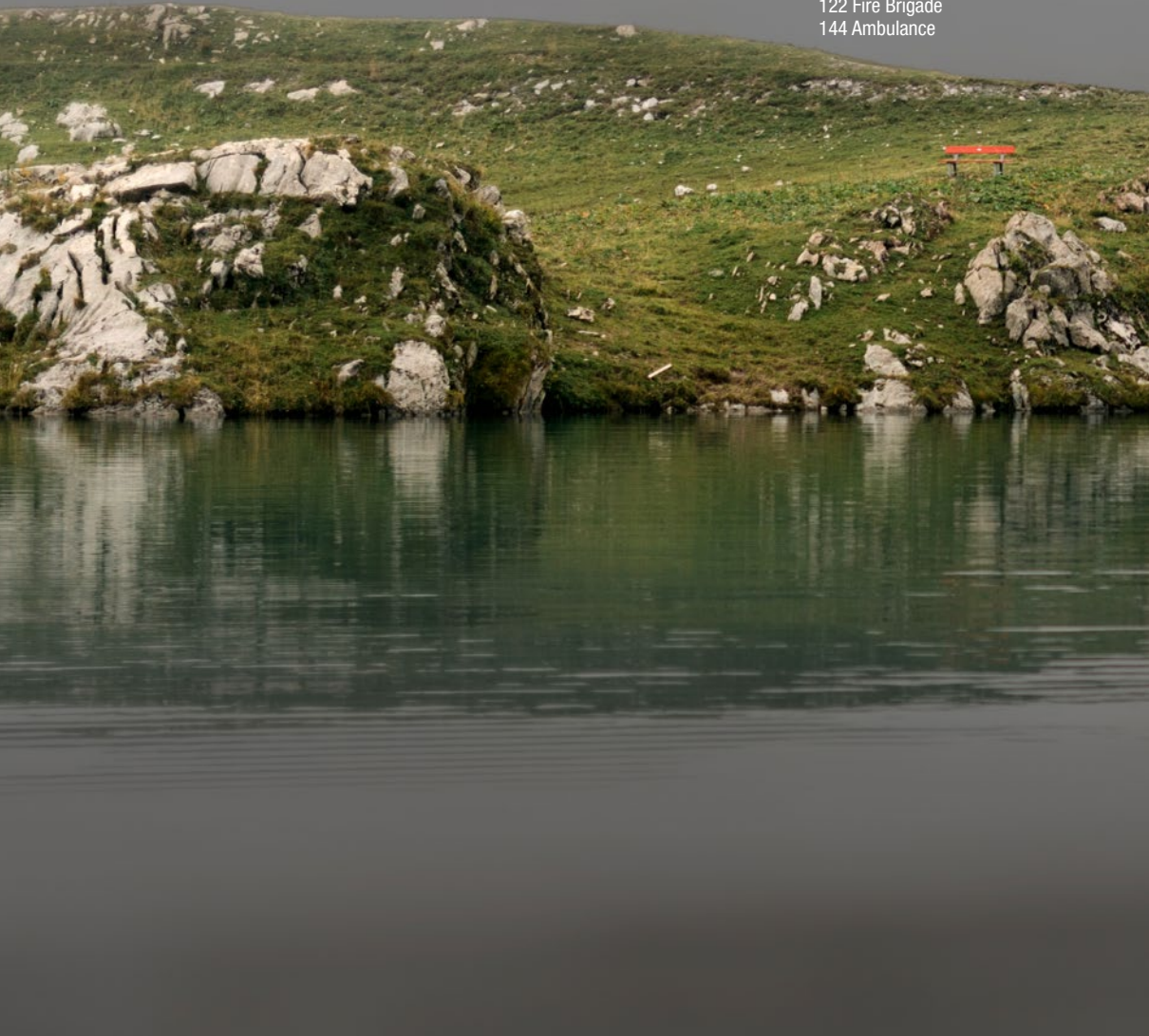
Arlberg WellCom
Hannes-Schneider-Weg 11
6580 St. Anton am Arlberg
Austria

ONSITE CONTACT:

M: +43 664 88 35 85 13
E: linc@regiol.at
Onsite contact number only during conference days.

EMERGENCY NUMBERS:

133 Police
112 European Emergency Number
122 Fire Brigade
144 Ambulance



THANK YOU FOR THE GOOD COOPERATION TO:



Bezirksgemeinschaft Vinschgau
Comunità Comprensoriale Val Venosta

